

# Demonstration for the Practical Application of Underground Cavities Detection with a Towing Vehicle

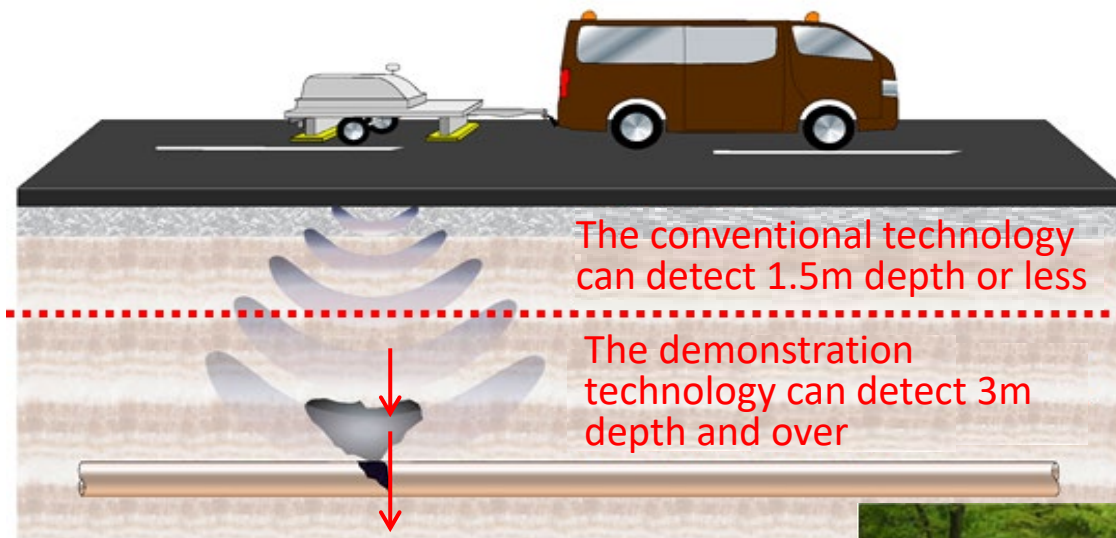
Implementer: The consortium of Kawasaki Geological Engineering Co.,Ltd., JS and Funabashi City

## Technology Overview

- Vehicle towing type cavity detection system
- Chirp system<sup>\*1</sup>, adopted as a signal transmission for underground detection, improves detection-able depth compared to the conventional pulse system<sup>\*2</sup>.

\*1: Chirp system can detect deeper than pulse system, and recognition ability is high.

\*2: The pulse system has a high recognition ability but has a small detectable depth.



## Achievements

- The new system improves detectable depth twice as the conventional underground cavity detection system.
  - The conventional system: depth of 1.5m or less
  - The new system: depth of **3.0m or more**
- The detection system can drive 50km/hour