

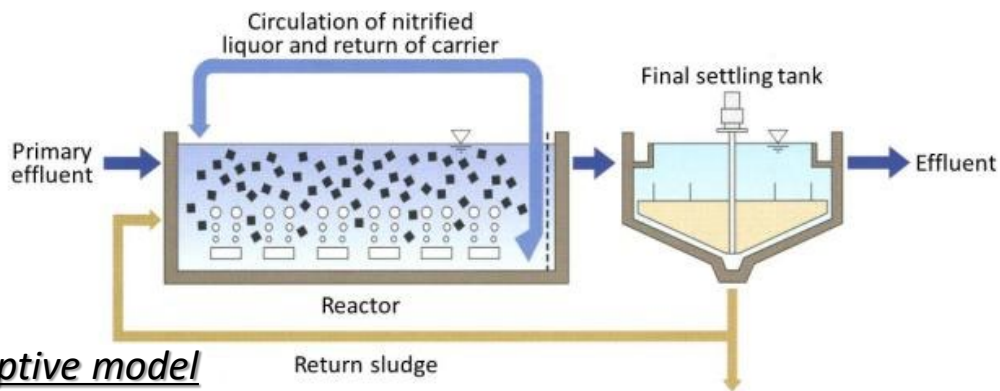
Carrier Added Activated Sludge Process (LINPOR Process)

Developers: NISHIHARA Environment Co., Ltd.

Supplied immobilized carrier (LINPOR cube) enables highly concentration of activated sludge and reduction of SS loadings to a final settling tank. Applicable to the inflow increase of the conventional activated sludge (CAS) process, and nutrients removal without expansion

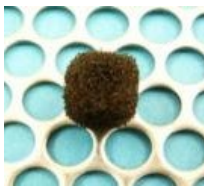
Inflow increase-adaptive model

Scope of application:
CAS process



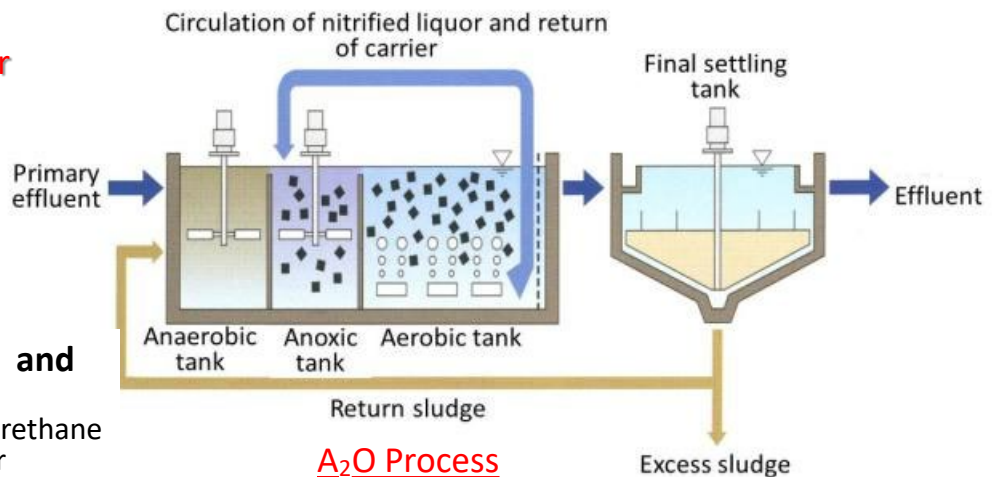
Nutrients removal-adaptive model

Scope of application:
Modified Ludzack-Ettinger process, A₂O Process



15 year old' LINPOR cube and carrier separation device

12mm*12mm*15mm, polyurethane requires no fine-mesh carrier separator that is easily clogged



Needs

- Dealing with temporary inflow increase with no additional wastewater treatment facilities

Benefits

- Inflow increase-adaptive model handles 150% increase in treated water at CAS process without additional reactor and final settling tank
- Nutrients removal-adaptive model works with no additional facilities. For new construction, its compact reaction tank enables space-saving