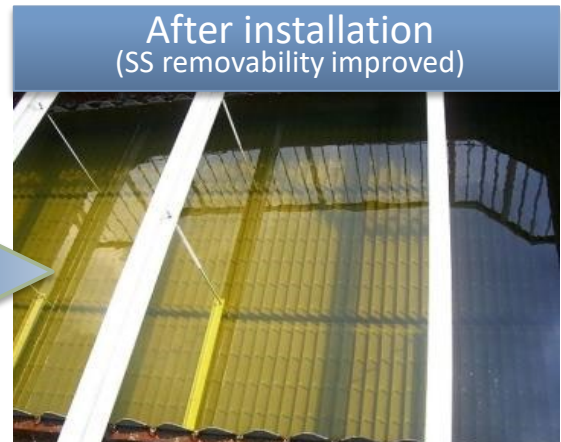
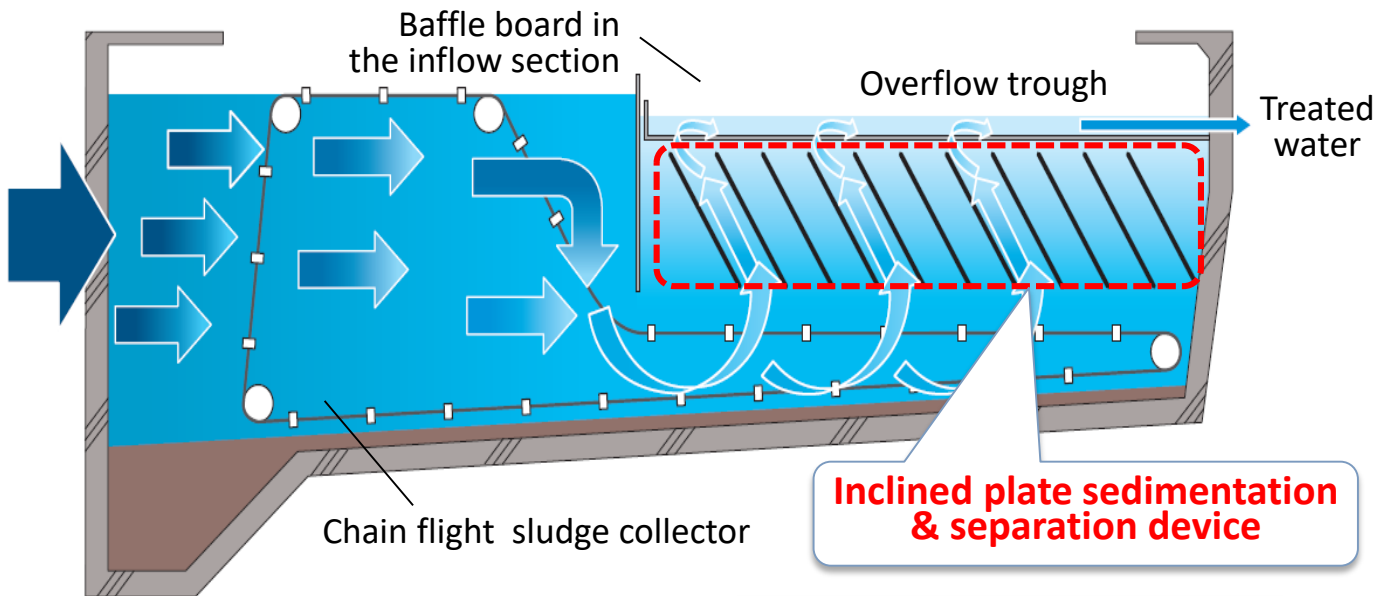


# Inclined Plate Sedimentation and Separation Device for Final Settling Tank

Developers: Sekisui Aqua Systems Co., Ltd.

Multiple inclined plates enlarge the settling area and improve the treatment performance of the existing final settling tanks with low costs



## Needs

- Utilize the existing facilities to deal with the inflow increase
- Sufficient performance for final settling tanks

## Benefits

- Improve SS removal performance with a simple mechanism
- Enable cost reduction for retrofit, remodel to nutrients removal, inflow fluctuation-adaptive, etc.